

— *Your guide to Lafayette County* —



McMillan
LAW OFFICE



2022

HOMETOWN

Connections



Welcome to *Lafayette County!*

The whisper of the wind around your ears; the gleam of sunlight between winding branches of a live oak; the cool, crisp feeling of ice-cold water from a freshwater spring; the feel of warm sand between your toes, these are all sensations that come to mind when thinking about Lafayette County. These sensations bind us together; they're all familiar to every one of us.

Maybe the wind reaches you from across a lush field, speckled with cows. Perhaps the sunlight stings your skin from between the many winding branches of Veterans Memorial Park. Maybe the warm sand and limerock provides a brief reprieve from the frigid temperature of Troy Springs' water.

If these sensations don't spark a fond memory, then it's the colorful community that brings warmth to your heart. Whether from a church social where you got to meet your neighbors, a school function where you met your spouse or even a sporting event where you and your friends cheer for the Hornets, the many faces and memories of Lafayette County are sure to be abundant.

Join us in this, our first issue of *Hometown Connections*, as we form your guide to Lafayette County. Many of the articles offer contact names, phone numbers, locations, titles and much more to help boast the wonders of living in one of the most enchanting rural counties in Florida.

Hold onto this publication and keep it in an easily accessible location. Don't hesitate to refer to it as often as needed.

Hometown Connections compiles information which may not be readily available about Lafayette County. We hope you will find it an informative piece to accompany our weekly publication, the *Riverbend News*, which is published every Wednesday.

We sincerely hope to place the whole of Lafayette County into the palms of your hands.

Sincerely,
The Riverbend News Staff

*Cheltsie Holbrook, Rachal Deming, Amber Albritton, Lucy Golub, Danny Federico, Lee Trawick,
Christian Peterson, Grace McAlister, Robin Jones and Jessica Peterson.*

Hometown Connections

Index:

Welcome 2

Advertising Index75

The Basics 4

Lafayette's Earliest5
Leisure6
Utilities7
Libraries/Post Offices8
Driver's Licenses9

Government 10

Lafayette County Commissioners10
Town of Mayo Elected Officials11
Town of Mayo Council11
State & Federal Officials12-13
Lafayette School Board14
Taxes, Permits & Voting15-16

Business 17

Banks18
Businesses & Shopping, Services18-21
Insurance Agencies/Lodging20-21

Health 22

Clinics23
Health Care23
Nursing Homes23

Faith 24

Churches25

Education 26

Public Schools27
Private Schools & Home School27

Sports 28

Recreational Activities29

Community 30

Town of Mayo31
Town of Day31
Organizations31
Childcare31

Lafayette Media:

Publisher:

Cheltsie Holbrook

Office Manager:

Rachal Deming

Bookkeeping:

Rachal Deming

Designers:

Amber Albritton

Lucy Golub

Editors:

Danny Federico

Reporters:

Lee Trawick

Christian Peterson

Grace McAlister

Advertising:

Robin Jones

Jessica Peterson

Circulation:

Dan & Gayle

Maintenance:

Fredy Vasquez



2022 Hometown Connections
published by:

Riverbend News

P.O. Box 6034 • Live Oak, Fla. 32064
(386) 364-4141 • www.riverbendnews.org



IN THIS SECTION

Lafayette's Earliest,
Leisure, Utilities,
Recycling,
Driver's Licenses,
Libraries,
Post Offices
and Safety

The Basics

Your guide to Lafayette County

A SHORT HISTORY: THE BIRTH OF LAFAYETTE COUNTY

Lafayette County was created on Dec. 23, 1856, from part of Madison County and was named in honor of the Marquis de Lafayette, the French general who assisted the Continental Army during the Revolutionary War. Back then, Lafayette was also comprised of Dixie County, which was created from the lower part of Lafayette County in 1921.

The Town of Mayo was established in 1874 by John B. Whitfield and was named in honor of James M. Mayo, a colonel in the Confederate Army and father of Nathan Mayo, who served as State Commissioner of Agriculture from 1923 to 1960. Mayo became the county seat of Lafayette County in 1892, after the courthouse in the previous county seat at New Troy was destroyed by fire on New Year's Eve. A two-story wood-frame courthouse was completed in 1894, but was moved in 1907 to its current site at the corner of

Fletcher and Bloxham Streets (now Le Chateau De Lafayette) to make way for the present courthouse, which was completed in 1909. In December 2021, over 100 years after its establishment, the courthouse's clocktower was finally removed for restoration.

Like other rural counties, you may have to dig a little deeper to find activities appealing to travelers, but many natural springs, riding trails, parks and festivals exist in Lafayette County if you look in the right places. Luckily, you're holding the 2022 edition of *Hometown Connections*—your guide to Lafayette County. *Hometown Connections* will provide you with everything you need to know about Lafayette County; whether it's the contact for your local daycare, information on building permits or the sports teams available at local high schools, *Hometown Connections* has got you covered.



- The **Mallory Swamp Wildlife Management Area** includes more than 31,318 acres in southeastern Lafayette County. The cypress swamps, titi swamp, peat bogs and uplands are recovering from a severe wildfire that swept through the area in 2001. This fire, in combination with restoration of natural water levels, has resulted in accelerated recovery of the area's native vegetation. Recreational opportunities include hunting, fishing, wildlife viewing, horseback riding, hiking and biking. Wildlife include white-tailed deer, feral hogs, turkey, limpkins, wood storks and great blue herons. Nearly 100 miles of grassy roads are within the area. The area is open to public access year-round. Mallory Swamp Wildlife Management Area can be accessed through the Lafayette Forest Wildlife and Environmental Area at 7886 SR 349, in Lafayette County. Call (386) 758-0525 for more information.

- **Suwannee River Rendezvous Resort and Campgrounds**, located at 828 NE Primrose Rd., in Mayo, is a 40-acre campground that has much to offer campers, whether their stay is short or long-term. The Lower Rendezvous offers primitive tent sites, water and electric only sites. The Upper Rendezvous, also known as the RV Resort, has sites for larger campers, which include cable and Wi-Fi. Suwannee River Rendezvous Resort and Campground is home to Convict Springs, which is a natural freshwater spring that feeds into the Suwannee River. Call (386) 294-2510 for more information.

- Expect high-quality hunting and wildlife viewing along miles of trails open for hiking, bicycling and horseback riding at the **Lafayette Forest Wildlife and Environmental Area**, located at 7886 SR 349, in Branford. From gopher tortoises to white-tailed deer, visitors can expect to see a wide range of wildlife in a variety of natural communities. Over 2,000 acres of swamps, marshes, flatwoods and hardwood hammocks are managed and restored in the area for wildlife and recreation.

- **Lafayette Blue Springs State Park** is a Florida State Park located on the west side of the Suwannee River, seven miles northwest of Mayo, off US 27. It contains

one of the state's 33 first magnitude springs, with a daily discharge of up to 168 million gallons. Many animals live in and around the park including white tail deer, gulf hammock rats, red belly snakes and plenty more. The park also makes an excellent location for bird watching with sightings of doves, eagles, warblers and woodpeckers. Additionally, some of the park's amenities include boating, canoeing, fishing, hiking, kayaking and picnicking. Camping and restrooms are also available. The park is open between 8 a.m. to sundown every day of the year, including holidays. Lafayette Blue Springs State Park is located at 799 Blue Springs Rd., in Mayo.

- **Veteran's Memorial Park** is a lovely spacious park with a band pavilion, picnic pavilions, children's playground, basketball courts, picnic tables and sitting areas throughout the park. There are also public bathrooms, old oak trees for plenty of shade and an Old Cracker House to explore. Veteran's Memorial Park is located at 123 SW CR 300, in Mayo.

- The **Edward Perry Sports Complex** is a large complex, complete with a walking track, baseball fields, basketball courts, tennis courts, picnic pavilions, as well as public restrooms and a concession stand. The park is located at NE CR 400, in Mayo.

- The **Day Community Park** is a quaint area with lots of playground equipment, baseball diamond, basketball courts, tennis courts, picnic tables, public restrooms and a community center. The Day Community Park is located at 4673 CR 53, in Mayo.

- **Troy Springs**, is a 70-foot-deep, first-magnitude spring that offers opportunities for swimming, snorkeling and scuba diving. Nestled in the shallow water of the spring run are the remains of the Civil War-era steamboat Madison, which was scuttled in 1863 to keep it from being captured. A hidden gem in north-central Florida, Troy Spring has restrooms, an accessible walkway, picnic tables, a nature trail and a riverside dock for canoeists and boaters on the Suwannee River. Only open-water scuba diving is permitted and divers must be certified; no solo diving is allowed. Troy Springs is located at 674 NE Troy Springs Rd., in Branford.

Electricity

Duke Energy

Dukeenergy.com

(800) 744-8744

Suwannee Valley Electric Cooperative

11340 100th St.

Live Oak, Fla. 32060

Svec-coop.com

(386) 362-2226

Telephone

Consolidated Communications

Consolidated.com

(844) 968-7224

Windstream

Windstream.com

1 (800) 347-1991

Cable Television

DIRECTV

www.directv.com

(888) 777-2454

Dish Network

www.dish.com

(855) 218-0469

Xfinity

www.xfinity.com

(844) 544-5181

Propane Services

J&J Gas Service

185 E Main St.,

Mayo, Fla. 32066

(386) 294-1801

Fuel Suppliers

Exxon

391 E Main St.

Mayo, Fla. 32066

(386) 294-2453

Fast Track

363 Bryan Ave.

Mayo, Fla. 32066

(386) 294-2453

Jiffy Food Store

203 E Main St.

Mayo, Fla. 32066

(386) 294-1513

Natural Gas

Town of Mayo

276 W Main St.

Mayo, Fla. 32066

(386) 294-1551

Water & Sewer

Town of Mayo

276 W Main St.

Mayo, Fla. 32066

(386) 294-1551

Contact the environmental health office for free information about sewage, septic, drinking water or pools/spas at (386) 294-1321 or visit floridahealth.gov/environmental.

Recycling

Lafayette County Landfill

525 SW Landfill Rd.

Mayo, Fla. 32066

(386) 294-3509

Libraries

Lafayette County Public Library

120 NE Crawford St.

Mayo, Fla. 32066

(386) 294-1021

M-F: 8:30 a.m. – 5 p.m.

Post Offices

Day Post Office

4573 CR 53

Day, Fla. 32013

(800) 275-8777

M-F: 8 a.m. – 10 a.m.

Mayo Post Office

157 E Main St.

Mayo, Fla. 32066

(800) 275-8777

M-F: 9 a.m. – 12:30 p.m.,

1:30 p.m. – 4:30 p.m.

Sat.: 9 a.m. – 12 p.m.



Bass Assassin Fishing Lures

668 N Fletcher Ave.

Mayo, Fla. 32066

www.bassassassin.com

(386) 294-1049 Phone

(386) 294-3495 Fax

"Family owned and operated; Bass Assassin Lures is a soft plastic fishing lure manufacturer. We have been around for 30+ years. No matter what type of fish you're trying to catch; we've got something that will do the trick!"



**Lafayette County
Driver License and
Motor Vehicle Service
Center**

120 W Main St.
Mayo, Fla. 32066
www.flhsmv.gov
(386) 294-1961

License Fees

New License: \$54.25

License Renewal:
\$54.25

Endorsement: \$7

Commercial Driver's

License: \$81.25

Photo ID: \$31.25

Late Fee: \$15

Safety

**Lafayette County
Sheriff's Department**

(386) 294-1222

Lafayette County Jail

(386) 294-1301

Emergency Medical

Services

(386) 294-1633

**Emergency
Management**

(386) 294-1950

**Mayo Volunteer Fire
Department**

(386) 294-3989



The Lafayette County Sheriff's Office proudly provides a myriad of services to the citizens of Lafayette County including uniformed patrol, criminal investigations, court services, corrections, dispatch/911 call center, records and administration. The Lafayette County Sheriff's Office serves all 548 square miles of Lafayette County, including the town of Mayo and the communities of Day, Cooks, Hammock and Hatchbend.

Sheriff Brian Lamb began working for the Lafayette County Sheriff's Office in 1997. He worked as a deputy sergeant until 2003, when he became a trooper for Florida Highway Patrol. In 2008, Lamb was elected Sheriff of Lafayette County. He was re-elected in 2012 and again in 2016.

The Lafayette County Sheriff's Office operates year-round, 24 hours per day, seven days per week. Administration can be reached in person or by telephone Monday through Friday (except on holidays) between the hours of 8 a.m. and 5 p.m. The office is located at 231 northwest Monroe Avenue at the intersection of northwest Crawford Street in Mayo.

IN THIS SECTION

Lafayette Elected
Officials, Mayo Town
Council, State and
Federal Officials,
Lafayette School
Board, Taxes, Permits
and Voting

GOVERNMENT

Lafayette County Commissioners

District 1



Lance Lamb

l.lambdistrict1@windstream.net

District 2



Henry McCray

h.mccraydistrict2@windstream.net

District 3



Lisa Walker

l.walkerdistrict3@windstream.net

District 4



Anthony Adams

a.adamsdistrict4@windstream.net

District 5



Earnest Jones

e.jonesdistrict5@windstream.net

Clerk of Court



Steve Land

120 W Main St.
Mayo, Fla. 32066
(386) 294-1600

Tax Collector



Chuck Hewett

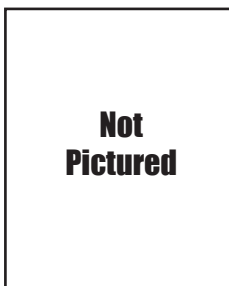
120 W Main St.
Mayo, Fla. 32066
(386) 294-1961



Lance Braswell
Agency Manager

874 E. Main St., Mayo, Fla. 32066
(386) 294-1399

Mayo Town Council



Ann Murphy



Wayne Hamlin



Jessica Lawson



Virginia McCray



Angela Ball



Janet Putnel



Mamie Thomas

The Mayo Town Council can be reached at (386) 294-1551. Mayo Town Hall is located at 276 W Main St., Mayo, Fla. 32066.

State & Federal Council Groups

State Attorney



John Durrett

State Attorney Third Judicial
Circuit of Florida
Office of the State Attorney
310 SW Pine Ave.
Live Oak, Fla. 32060
(386) 362-2320

Public Defender



Cliff Wilson Jr.

Third Judicial Circuit of
Florida Office of the
Public Defender
Columbia County Courthouse
173 NE Hernando Ave.,
Ste. 115
Lake City, Fla. 32055
(386) 758-0540

U.S. Senator, Jr.



Marco Rubio (R)

Washington Office: 284
Russell Senate
Office Building
Washington, D.C. 20510
(202) 224-3041
Fax: (866) 630-7106
Jacksonville Office: 300 N
Hogan St., Ste. 8-111
Jacksonville, Fla. 32202
(904) 354-4300
Fax: (904) 398-8591

U.S. Senator, Sr.



Rick Scott (R)

Washington Office: 716
Hart Senate Office Building
Washington, D.C. 20510
(202) 224-5274
Fax: (202) 228-2183
Tallahassee Office: 111 N
Adams St. Ste. 208
Tallahassee, Fla. 32301
(850) 942-8415
Fax: (850) 942-9450

Florida House of Representatives District 7



Jason Shoaf

1401 The Capitol
402 S Monroe St.
Tallahassee, Fla. 32399-1300
(850) 717-5007



State & Federal Council Groups

Florida Senate District 3



Lorrane Ausley (D)

202 Senate Building
404 S Monroe St.
Tallahassee, Fla. 32399-
1100
(850) 487-5003

U.S. Representative District 2



Neal P. Dunn (R)

Washington Office: 316
Cannon House Office Bldg
Washington, D.C. 20515
(202) 225-5235
Tallahassee Office: 300
South Adams St.
Tallahassee, Fla. 32301
(850) 891-8610

Florida Senate District 7



Jennifer Bradley (R)

Kingsley Center
1279 Kingsley Ave.,
Ste. 117
Orange Park, Fla. 32073
(904) 278-2085



Lafayette County School Board

Superintendant



Robert Edwards

redwards@lcsbmmail.com

District 1



Darren Driver

ddriver@lcsbmail.net

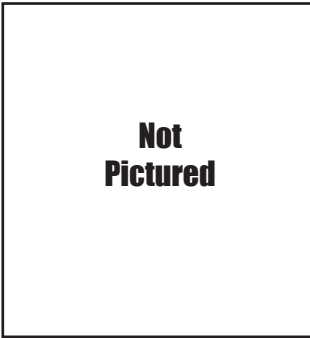
District 2



Jeff Walker

jwalker@lcsbmail.net

*District 3
Vice Chair*

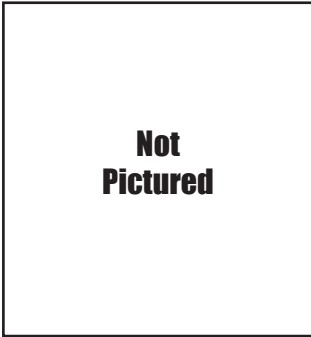


**Not
Pictured**

Marion McCray

mmcray@lcsbmail.net

District 4

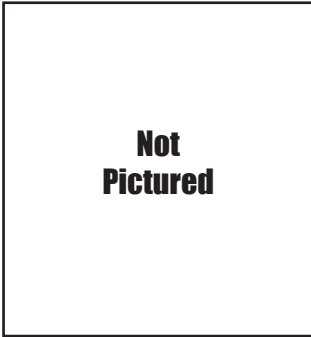


**Not
Pictured**

Amanda Hickman

ahickman@lcsbmail.net

District 5



**Not
Pictured**

Taylor McGrew

tmcgrew@lcsbmail.net



Property Taxes

Your tax bill is determined by the local taxing districts (Lafayette County Commission, Suwannee River Water Management District, Lafayette County School District and municipalities). The appraisals for property are done by Property Appraiser Wayne McCray's office, which is located at 120 W Main St., Mayo, Fla. 32066. Property owners are taxed on the assessed value of the property times the county millage rate minus any exemptions for which they qualify. The current millage rate varies and the taxes increase if the property is located within a municipality (i.e., the Town of Mayo).

Homestead Exemption

To claim a homestead exemption or other exemptions, such as widow/widower's exemption or senior citizen's exemption, the property owner must go to Wayne McCray's office to fill out the appropriate paperwork in order to claim the exemption. A new law requires yearly registration if there is any change in the property status. New construction has no assessment charged the first year of construction completion. If you have any questions for the property appraiser's staff, please call (386) 294-1991.

Licenses and Permits

Chuck Hewett serves as the county's tax collector. Besides property taxes, Hewett and his staff collect revenue from occupational license fees (set by the county commissioners) and from hunting and license fees (set by the state). You may call the tax collector's office to locate the figures for the 2022 tax season. Hewett's office is located at 120 W Main St., Mayo, Fla. 32066. Call (386) 294-1961 for more information.

Vehicle Registration

After you purchase a car or reside in the state with a new or used car, the State of Florida requires you to register the vehicle for 12 months (primary owner's birthday to birthday) with the Florida Division of Motor Vehicles (FDMV). Non-transferable registration

consists of the following items: 1.) Serially numbered validation decal to be placed on license plate, attached in a visible place on the rear of the vehicle. 2.) A registration certificate (keep a copy handy in your vehicle at all times, as you may be asked to present it to any law enforcement officer in case of an accident or an alleged traffic law violation or infraction). Registration will require that you bring with you to the FDMV office: 1.) Proof of Florida insurance (issued or countersigned by a Florida agent); 2.) Vehicle Title; 3.) Proof of identity (photo driver license or current passport) and 4.) Taxes and fees, including an initial registration fee of \$225. Chapter 320, Florida Statutes, enumerates Florida law regarding these requirements. For complete answers on this subject, visit the website at www.flhsmv.gov or call (850) 617-2000 or the Live Oak DMV at (386) 362-5550.

Building Permits

If you are planning to build in the near future, then you need to seek out the Building Department, located at 120 W Main St., Mayo, Fla. 32066 or call (386) 294-3611. Newcomers who plan to occupy a mobile or manufactured home need to visit the same Building Department office, where they can pick up a packet of information regarding county requirements for mobile home residents. Also available from the Building Department is a checklist which outlines requirements for a permit for mobile home residents. A new septic tank permit can be obtained for \$250 through the Health Department, which can be reached at (386) 294-1321.

Voting

Elected officials play an important role in the quality of life in Lafayette County. To cast your vote for those you trust the most, you need to register to vote at the office of the Supervisor of Elections. Supervisor Travis Hart and his staff are located at 120 W Main St., Mayo, Fla. 32066 and can be reached at (386) 294-1261. You can pick up an application to register to vote at the county's library, city and town halls or any office that offers family services. Registration is simple; you just have to fill out the application. You will receive your voter card

by mail soon afterward. Remember to carry your photo ID to the polls when you vote. Hart's office will provide you with a district and precinct map to help you orient yourself to your proper polling place. What changes were made to the election process? In December 2005, the elections office installed a new system which allows anyone, regardless of disability, to be able to vote independently. The tabulator will reject the vote if the voter has over-voted. School board races are now non-partisan. This means the voters in his/her own district will be able to vote for any of the school board candidates, regardless of the voter's or the candidate's political party affiliation. They now have a "universal ballot," which means if there is no opposition in the general election, then all voters, regardless of party affiliation, will be able to vote.

Circuit Court

The office of the Clerk of the Circuit Court has both court and Lafayette County government responsibilities. The Clerk serves as the Clerk of both the circuit and

county courts, helping people gain access to the courts while maintaining the courts' records for criminal felony and misdemeanor cases, circuit and county civil, family, probate and small claims proceedings, juvenile cases and traffic citations. In addition to collecting and disbursing court fines and fees, the Clerk's office handles jury summons, juror and witness fees, issues marriage licenses and processes passport applications. The Constitution of Florida also specifies the Clerk serves as the Clerk of the Board of County Commissioners and Clerk to the Value Adjustment Board. As Comptroller, the Clerk is the custodian of all county funds and responsible for the safekeeping of the county's revenues and watching over its expenditures. The Clerk also serves the public as the County Recorder and guardian of the public records of Lafayette County. The Clerk of the Circuit Court welcomes you to view its website at www.lafayetteclerk.com. The Clerk of the Circuit Court for Lafayette County is Steve Land. The Clerk of the Circuit Court is located at 120 W Main St., Mayo, Fla 32066. Land can be reached at (386) 294-1600 or by mail at P.O. Box 88, Mayo, Fla. 32066.



IN THIS SECTION

Restaurants, Shopping,
Banks, Lodging
and Other Businesses
& Services



BUSINESS

Your guide to Lafayette County

BANKS

Drummond Community Bank

307 E Main St.
Mayo, Fla. 32066
(386) 294-2000
www.drummondbank.com

First Federal Bank

187 N Fletcher Ave.
Mayo, Fla. 32066
(386) 294-1940
www.ffbf.com

Lafayette State Bank

340 W Main St.
Mayo, Fla. 32066
(386) 294-1901
www.lafayettestatebank.com

Western Union Money Transfer Service

Exxon - Fast Track #264

391 E Main St.
Mayo, Fla. 32066
(386) 294-2453

TOURISM

Lafayette County Chamber of Commerce

116 SW Monroe Ave.
Mayo, Fla. 32066
(306) 209-2988

HARDWARE BUILDING/FARM SUPPLY

Mayo Fertilizer Inc.

300 Clyde St.
Mayo, Fla. 32066

(386) 294-2024

Mayo Hardware

214 W Main St.
Mayo, Fla. 32066
(386) 294-1771

Mayo Truss Company, Inc.

845 US 27
Mayo, Fla. 32066

AUTO PARTS/ REPAIR

(386) 294-3988

Auto Unique

305 W Main St.
Mayo, Fla. 32066
(386) 294-3696

Mayo Auto Parts

103 E Main St.
Mayo, Fla. 32066
(386) 294-1931

Mayo Truck Clinic Inc.

4075 NE CR 354
Mayo, Fla. 32066
(386) 294-2027

NAPA Auto Parts – Hamlin

Auto Supply Inc.
718 E Main St.
Mayo, Fla. 32066
(386) 294-1114

W.R. Williams Distributors Inc.

1404 E Main St.

LAWN EQUIPMENT/ TRACTOR PARTS

Mayo, Fla. 32066

(386) 294-1888

Byrd's Power Equipment

11860 US 27
Branford, Fla. 32008
(386) 935-1544
www.byrdsdepot.com

Lee's Custom Services

4795 S SR 349
Branford, Fla. 32008
(386) 935-3110
www.leescustomservice.com

Pridgeon Garage

410 SW CR 300
Mayo, Fla. 32066
(386) 294-2926

LAWNCARE/ LANDSCAPING

GroundTek Landscaping

9921 US 27
Mayo, Fla. 32066
(386) 678-1223

Pridgeon's Lawn Service

420 NE Franklin Rd.
Mayo, Fla. 32066
(386) 854-0859

RESTAURANTS

Casa Frias Mexican Cuisine

181 W Main St.
Mayo, Fla. 32066
(386) 294-5422

Hazel's Good Food

530 S Fletcher Ave.

Mayo, Fla. 32066
(386) 294-3002

The Hornet Café
152 W Main St.
Mayo, Fla. 32066
(386) 294-5414

Mayo Café
220 W Main St.
Mayo, Fla. 32066
(386) 294-2127

Mayo Subs and More
439 E Main St.
Mayo, Fla. 32066
(386) 294-2262

Mi Viejo Restaurante
158 N Fletcher Ave.
Mayo, Fla. 32066
(386) 294-1111

FAST FOOD

Subway
254 E Main St.
Mayo, Fla. 32066
(386) 294-2371

Krispy Krunchy Chicken
Exxon – Fast Track #264
391 E Main St.
Mayo, Fla. 32066
(386) 294-2453

GROCERY/FOOD STORES

Mayo Food Mart
133 W Main St.

Mayo, Fla. 32066
(386) 294-3865

Mayo Thriftway
294 W Main St.
Mayo, Fla. 32066
(386) 294-1165

Jiffy Food Store
203 E Main St.
Mayo, Fla. 32066
(386) 294-1513

LAUNDRY

Coin Laundromat
273 W Main St.
Mayo, Fla. 32066

BAKED GOODS/CATERING

Sweetly Baked by Keesha
No Physical Address
sweetlybakedbyk@gmail.com
www.facebook.com/sweetlybakedbyk

Laila's Homemade Sweets
No Physical Address
(386) 854-1104

Kim's Cakery
No Physical Address
(386) 243-1387

Sadie Ruth's Cookie Jar
No Physical Address
(386) 688-2656
www.facebook.com/sadieruthscookiejar

FLORISTS

Kim's Enchanted Florist
224 Park St.
Mayo, Fla. 32066
(386) 294-1000

SALONS/BARBERS

Cindy's Hair Styling
115 Park St.
Mayo, Fla. 32066
(386) 294-1140

Sandy's Country Curl
348 Fletcher St.
Mayo, Fla. 32066
(386) 294-2346

NAILS

Fee'rce Nails
348 N Fletcher Ave.
Mayo, Fla. 32066
(386) 688-2209

SHOPPING

386 Liquidation & More
172 W Main St.
Mayo, Fla. 32066
(386) 854-5871

Hey Girl Co.
270 W Main St.
Mayo, Fla. 32066
(386) 294-1414 or (386) 209-2596

The Hornet's Nest
152 W Main St.
Mayo, Fla. 32066

Pressed Creations by Dee
170 W Main St.
Mayo, Fla. 32066
(386) 294-1006

Sadler Bag Company
No Physical Address
(386) 330-4322
www.sadlerbags.com

ANTIQUES

Dust Catcher
153 W Main St.
Mayo, Fla. 32066
(386) 294-2482
FedEx Drop Box

MAILING SERVICES

Cindy's Motel & RV Park
487 W Main St.
Mayo, Fla. 32066

FedEx OnSite
Dollar General
488 W Main St.
Mayo, Fla. 32066
Dollar General

DOLLAR STORES

488 W Main St.
Mayo, Fla. 32066
(386) 516-3610

Family Dollar
312 E Main St.
Mayo, Fla. 32066
(386) 703-6051

PETS

Animal Health International Inc.
296 SE Industrial Park Cir.
Mayo, Fla. 32066
(386) 294-2802
www.animalhealthinternational.com

Animal Housing Solutions
190 W Main St.
Mayo, Fla. 32066
(386) 628-2315

The Best Dog Products
1175 SW Abbott Brack Rd.
Mayo, Fla. 32066
(386) 243-5502

Mayo Town & Country Hospital
974 E Main St.
Mayo, Fla. 32066
(386) 294-5000
www.mtacah.com

REAL ESTATE

Chan Perry, United Country Real Estate
788 CR 353
Mayo, Fla. 32066
(386) 688-2557

River Springs Realty, LLC
597 E Main St.
Mayo, Fla. 32066
(386) 294-3232

LAW OFFICES

Hatton Law, PA
110 S Fletcher Ave.
Mayo, Fla. 32066
(386) 294-2054

McMillan Law Office
152 W Main St.
Mayo, Fla. 32066
(386) 294-1688

PHONE REPAIR

The Phone Guy 32066 LLC
170 W Main St.
Mayo, Fla. 32066
(954) 982-5636

FUNERAL HOME

Burns Funeral Home
440 SW Monroe Ave.
Mayo, Fla. 32066
(386) 294-2658

INSURANCE

C&C Insurance of North Florida
258 W Main St.
Mayo, Fla. 32066
(386) 294-1445

Farm Bureau Insurance
874 E Main St.
Mayo, Fla. 32066
(386) 294-1399

LODGING/RV PARKS

Le Chateau de Lafayette

136 N Fletcher Ave.
Mayo, Fla. 32066
(386) 294-2332

Cindy's Motel and RV Park
487 W Main St.
Mayo, Fla. 32066
(386) 294-1242

MEAT PROCESSING/ BUTCHER

**Ross' Wild Game & Sausage
Processing**
10103 SE CR 405
Branford, Fla. 32008
(386) 209-0340

CLEANING/ PRESSURE WASHING SERVICE

Johnson Pressure Washing
959 SE CR 475
Branford, Fla. 32008
(386) 854-1978

**Summit Pressure Washing
Services LLC**
7025 SW CR 534
Mayo, Fla. 32066
(352) 210-6947

Hey Girl Co.

clothing boutique
www.heygirlcompany.com

Melissa McCray
(386) 209-2596
heygirlorders@gmail.com
270 W Main St Mayo, Fla. 32066



Business Owners,
reach MORE households
throughout Hamilton,
Lafayette and Suwannee
Counties when you ad-
vertise with *Riverbend
News!*

Call (386) 364-4141 or email adrep@riverbendnews.org to get started.

Words for the wise

IN THIS SECTION

Clinics, Dental,
Pharmacies, Mental
Health, Rehab/Long
Term Care and the
Department of Health



Florida Department of Health
Lafayette County
140 SW Virginia Circle

HEALTH

Your guide to Lafayette County

CLINICS

**Doctors Memorial
Family Medicine**
**Dr. Tae In Yu, Family
Medicine/Internal Medicine**
**Marla Driver, NP,
Internist/Pediatrician**
**Kimberly Hatch Jackson, NP,
Internal Medicine**
117 SW Virginia Cir.,
Mayo, Fla. 32066
M-F: 8 a.m. - 12 p.m.,
1 p.m. - 5 p.m.
(386) 294-2475

North Florida Medical
**Dr. Bogdan Maliszewski, MD,
Family Practice Physician**
**Debbi R. Rye, APRN,
General Practitioner**
710 W Main St.,
Mayo, Fla. 32066
(386) 294-1226

DENTAL

**Lafayette County
Health Department**
Dr. Stanley S. Jones, DMD
140 SW Virginia Cir.,
Mayo, Fla. 32066
(386) 294-1321

PHARMACY

**North Florida Pharmacy
of Mayo**
229 W Main St.,
Mayo, Fla. 32066
M-F: 8:30 a.m. - 6 p.m.

Sat.: 9 a.m. - 1 p.m.
(386) 294-3777

MENTAL HEALTH

A New Dawn, A New Beginning
117 SW Virginia Cir.,
Mayo, Fla. 32066
555 N Byron Butler Pkwy.,
Perry, Fla. 32347 (Main Office)
M-F: 9 a.m. - 5 p.m.
(386) 294-1226
(850) 329-5776 (Main Office)

REHAB/LONG-TERM CARE

**Lafayette Nursing and
Rehabilitation**
512 West Main St.,
Mayo, Fla. 32066
(386) 294-3300

Lafayette Nursing and Rehabilitation is dedicated to helping guests not only recover, but live better lives by providing the highest level of medical treatment and patient care possible. Services provided include 24 hour skilled nursing care, wound care program, registered dietician services, long-term care, hospice/palliative care, psychological services, therapy services and respite care. Their amenities include spacious semi-private rooms, climate controlled heating and air conditioning and barber and beauty services on-site. Take a virtual tour of their site at www.lafayettenursingrehab.com.

DEPARTMENT OF HEALTH

**Lafayette County
Health Department**
140 SW Virginia Cir.,
Mayo, Fla. 32066
(386) 294-1321

The Lafayette County Health Department provides a large variety of programs and services including clinical/nutritional services, community health planning, emergency preparedness/response, environmental health, infectious disease services, wellness programs and more. The Lafayette County Health Department provides COVID-19 testing, with no appointment required. This clinic operates under a sliding scale model, meaning some services may not be free depending on your income. You will be required to prove financial need in order to receive free services or services at a reduced cost. To get more information on this clinic, visit www.lafayette.floridahealth.gov.





IN THIS SECTION

Lafayette County
Organizations and
Churches

FAITH

Your guide to Lafayette County

Worship has historically played a major role in Lafayette County's life. That holds true in the present as well. Along with numerous churches that dot the landscape, there are several faith-based organizations that serve the needs of Lafayette County residents in a variety of ways.

Airline Baptist Church

Preston Gainey
(386) 294-2676

Bethel Creek Baptist Church

Chad Little
(386) 658-1043

Brewer Lake Baptist Church

Michael Hornback
(386) 294-1578

Alton Church of God

Timothy R. Hamm
(386) 294-3133

Ephesus Advent Christian Church

Randy Henderson Jr.

(386) 693-6735

Hatch bend Apostolic Church

Steve A. Boyd
(386) 935-2806

Landmark Baptist Church

Stephen Hollar
(352) 257-9587

New Hope Baptist Church

Charlie Walker
(386) 294-2837

Our Lady of Guadalupe Church

Anthony Basso
(386) 294-3510

Walker Creek Bethel Baptist Church

Robert Moore Jr.
(386) 935-0941

Grace Baptist Church

Dwight Poole
(386) 935-0764



Paul Kinsley • (850) 464-1230

**Ponds • Demolition • Culverts
Grading • Fill Dirt • Milling
County Spec Driveways**



IN THIS SECTION

Public Schools, Private
Schools and Home
School

EDUCATION

Your guide to Lafayette County

PUBLIC SCHOOLS

Lafayette Elementary School, grades PreK-5; Stephen Clark, Principal; 811 E Main St., Mayo, Fla. 32066; (386) 294-2882.

Lafayette High School, grades 6-12; Stewart Hancock, Principal; 160 NE Hornet Ln., Mayo, Fla. 32066; (386) 294-1701.

Pursuant to the Florida Department of Education, parents or guardians enrolling their child in any Florida public school are required to show proof the child's age (birth certificate); a Florida Certificate of Immunization; evidence of a medical exam completed no less than 12 months prior to the child's school entry date and documentation that the parents or guardians reside in the school district.

eligible to home educate their children. Home education is defined as "sequentially progressive instruction of a student by his/her parent or guardian in order to satisfy school attendance requirements."

Parents and guardians should review the legal responsibilities and obligations carefully prior to enrolling their child into home education. It's suggested parents and guardians review resources at www.fldoe.org/schools/school-choice and www.flsenate.gov/laws/statutes. Those considering home school enrollment can review a home education packet on the Lafayette County School District website at

www.Lafayette.k12.fl.us/HomeEducationInformation. For more information, contact Becky Sharpe, Home Education Coordinator, at (386) 294-1417 or at bsharpe@lcsbmail.net.

PRIVATE SCHOOL

Lighthouse Christian Academy (LCA), Preschool-12; Connie Bowie, School Administrator; 772 N Hwy 51, Mayo, Fla. 32066; (386) 294-3089. LCA has the objective of being a distinguished place where truthful knowledge is taught, God is revealed, wisdom is sought, integrity is expected, excellence is applauded, leaders are developed, service is encouraged and participation is cultivated for the glory of God. "Train up a child in the way he should go and when he is old, he will not depart from it" (Proverbs 22:6). It is LCA's desire to not only minister to its students, but to also minister to their parents. For more information on LCA, call (386) 294-3089.

HOME SCHOOL

According to Florida Statute 1002.41, parents are



IN THIS SECTION

Little League, Adult
Sports and Exercise



SPORTS

Your guide to Lafayette County

LITTLE LEAGUE

Lafayette Babe Ruth League: Each winter, boys and girls ages four to 12 have the opportunity to participate in t-ball, baseball and softball through the Lafayette Babe Ruth League. For more information, visit the “Lafayette Babe Ruth” Facebook page.

Mayo Rec Soccer: In the winter, youth in grades K-8 have the opportunity to participate in recreational soccer. For more information, visit the “Mayo Soccer Rec” Facebook page.

LAFAYETTE HIGH SCHOOL

Competitive teams at Lafayette High School include:

- Boys’ baseball
- Boys’ football
- Boys’ golf
- Girls’ softball
- Girls’ volleyball
- Girls’ cheerleading

- Boys’ and girls’ basketball
- Boys’ and girls’ soccer

ADULT SPORTS

- Boys’ and girls’ track and field

Adults in Lafayette County can still stay active through an assortment of outdoor activities, such as biking, hiking, horseback riding, boating, hunting and fishing. The Edward Perry Sports Complex, located at NE CR 400, offers six baseball fields, two tennis courts and a large area for soccer enthusiasts.

EXERCISE

For those looking for a traditional brick and mortar location for physical activity, check out Country Strong Gym, located at 323 SE Industrial Park, Mayo, Fla. 32066. This family-run business offers 20 classes for all fitness levels, massages, tanning, karate, physical therapy, body sculpting, premade meals, vitamins and supplements. For more information, call (386) 294-5439 or email countrystronggymmayo@gmail.com.



IN THIS SECTION

Town of Mayo, Town of
Day, Organizations
and Childcare



COMMUNITY

Your guide to Lafayette County

TOWN OF MAYO

The Town of Mayo got its original name from Confederate Colonel James Mayo. It is the county seat of Lafayette County, Florida's second-least populous county. Possibly its biggest claim to fame is being the hometown of Kerwin Bell, a former University of Florida quarterback. The area's biggest employer is a state prison. With a population of just over 1,200, Mayo is the largest town in Lafayette County. The town's mayor, Ann Murphy, has served the town faithfully for many years. Contact the Town of Mayo for more information at (386) 294-2705. The Mayo Town Hall can be reached at (386) 294-1551 or visited at 116 SW Monroe Ave.

TOWN OF DAY

The Town of Day is a small unincorporated community and census-designated place in Lafayette County. This means Day's residents have neither formed their own municipal governments, nor have they been annexed into another town's local government. If you wish to speak with a government official regarding Day, you will need to contact Lafayette County's Board of Commissioners at (386) 294-1600. According to a 2020 census, Day's population is less than 100. Day's citizens enjoy their days at Day Community Park and Folsom & Prine Farms. Although it may not seem like such a small town has much to offer, its citizens are proud to call the quiet, serene town home.

ORGANIZATIONS

Lafayette Chamber of Commerce

116 SW Monroe Ave.
Mayo, Fla. 32066
M-F: 8 a.m. - 5 p.m.
(386) 209-2988

Boys & Girls Club

368 SW Pine St.
Mayo, Fla. 32066
M-F: 2 p.m. - 6 p.m.
(386) 294-2557

Lafayette UF/IFAS Extension

176 SW Community Cir.
Mayo, Fla. 32066
M-F: 8 a.m. - 5 p.m.
(386) 294-1279
jessjohnson@ufl.edu

**Sanctuary at Soledad - Farm Animal
Sanctuary Florida**
1525 SE CR 405

Mayo, Fla. 32066
8 a.m. - 6 p.m.
(661) 754-5003

Manna House

297 SE Pine St.
Mayo, Fla. 32066
(386) 294-2150

CHILDCARE

Tiny Tots

194 SE Land Ave.
Mayo, Fla. 32066
M-F: 7 a.m. - 5 p.m.
(386) 294-3936

Wee Kare Academy of Mayo

311 NE Crawford St.
Mayo, Fla. 32066
M-F: 6:30 a.m. - 6 p.m.
(386) 294-5437

The ***Riverbend News*** is a weekly paper that covers the areas of Suwannee, Hamilton and Lafayette Counties. The *Riverbend News* is published every Wednesday and can be located at 130 W Howard St., in Live Oak. The *Riverbend News* is published by *C&E Publishing, Inc.*, which is located at 130 W Howard St, in Live Oak, Fla. 32064. For news, subscriptions and/or advertising, call (386) 364-4141.

Magazine

Green Publishing, Inc. publishes a quarterly magazine titled *The Front Porch*. This publication seeks to educate visitors from near and far through sharing stories about local culture, businesses, travel destinations, history and the

people who make this area so unique.

Online Media

To keep up with local news online, subscribe to the *Riverbend News* E-pub by visiting www.riverbendnews.org. In addition, subscribe to their free newsletter. Twice a week, *Riverbend News* sends out a newsletter containing “breaking news” and the highlights of the last newspaper, in case you missed it. To register your email to the list, contact *Riverbend News* by calling (386) 364-4141 or emailing Danny Federico at reporter3@riverbendnews.org. Don’t forget to follow *Riverbend News* on Facebook at www.facebook.com/theriverbendnews or on their website www.riverbendnews.org.

Call of go online to start your subscription today!

\$45 Print ☐ \$30 E-Pub ☐ \$60 Print & E-Pub ☐
\$60 out of county ☐ \$75 out of county ☐

Name: _____

Address: _____

Phone Number: _____

Email: _____

☐ Please add me to the bi-weekly email newsletter at no additional cost

Riverbend News

(386) 364-4141
www.riverbendnews.org

*Scan the QR
code to
subscribe online*

